



MESA CHORIO VILLAS

OPTION B ON 918 A & B

Mesa Chorio Paphos

Cyprus



MESA CHORIO VILLAS

OPTION B ON 918 A & B

*Mesa Chorio Paphos
Cyprus*

3 Bedroom Villas

Off plan – choice of finishes



The Property

This spacious detached off plan villa features magnificent views of Paphos coastline and offers high quality finishes throughout. Ideally located on a small development, the villa is within a short walk to the village centre and a just few minutes to the International school, Paphos town and harbour area.

Comprising of an Italian styled kitchen with dining area off, large open plan living area leading to a spacious covered veranda; to the first floor, the master bedroom has access to a stunning veranda with sea views, it also boasts an en-suite bathroom. There are 2 further double bedrooms both of which share a luxurious family bathroom. Externally, the villa has off road parking, garden and space for a private swimming pool (optional).



Peaceful village location



MESA CHORIO VILLAS

OPTION A ON 918 A & B

*Mesa Chorio Paphos
Cyprus*

3 Bedroom Villas
Workmanship Guarantee Direct from Developer



Specifications

2 x 3 Bedroom Villas
Total Covered Areas - 164 Square Meters
Covered Verandas - 32.5 Square Meters
Uncovered Verandas - 28.5 Square Meters
Off plan – choice of finishes
Master En-suite shower
Guest cloakroom
Peaceful village location
Italian designed kitchen with granite worktops



Three Spacious Bedrooms



MESA CHORIO VILLAS

OPTION B ON 918 A & B

*Mesa Chorio Paphos
Cyprus*

3 Bedroom Villas
Close to all amenities



The Area

The traditional Cypriot village of Mesa Chorio is located in the foothills above Paphos, and enjoys magnificent views of Paphos coastline. This unspoilt village is ideally situated being just a few minutes drive to Paphos town, harbour and beaches. Local amenities include a supermarket and a couple of coffee shops, bars and restaurants all offering authentic Cypriot hospitality, culture and cuisine. There are 3 very good golf courses within a 15 minutes and Paphos International airport is approximately 20 minutes away.

Nestled in the South-West corner in probably the most beautiful part of the island and sheltered from the North by the Troodos mountains, Paphos enjoys mild winters and warm, seemingly endless summers. The irrigation system has helped to turn Paphos into the “garden of Cyprus” and it is also renowned as having one of the healthiest climates in the Mediterranean. Paphos has become the focus of one of the most exciting areas for real estate investment in the eastern Mediterranean. The Government and private enterprise continue to invest heavily in the infrastructure, providing such features as extending the motorway network, extensive improvements.





MESA CHORIO VILLAS

OPTION B ON 918 A & B

*Mesa Chorio Paphos
Cyprus*

3 Bedroom Villas
Stunning Sea & Mountain views



Guarantees

Guaranteed title deeds

12 month workmanship guarantee

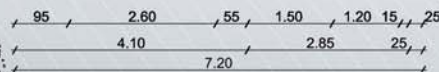
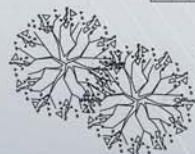
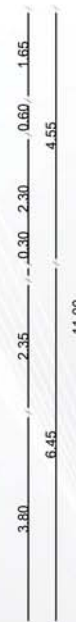
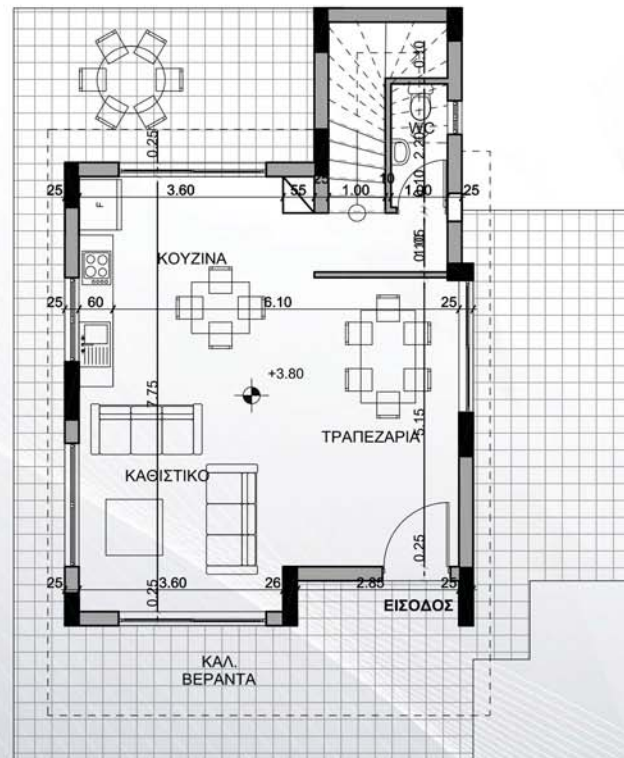
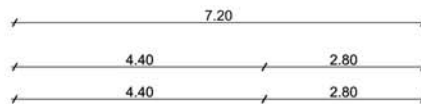
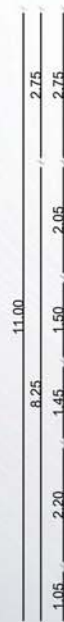
10 year structural guarantee

Tailored payment terms

After sales service



5 Minutes to Paphos International School



Ground Floor

On Plot 918A&B

MESA CHORIO GROUND
FLOOR OPTION B

A.M. 040316

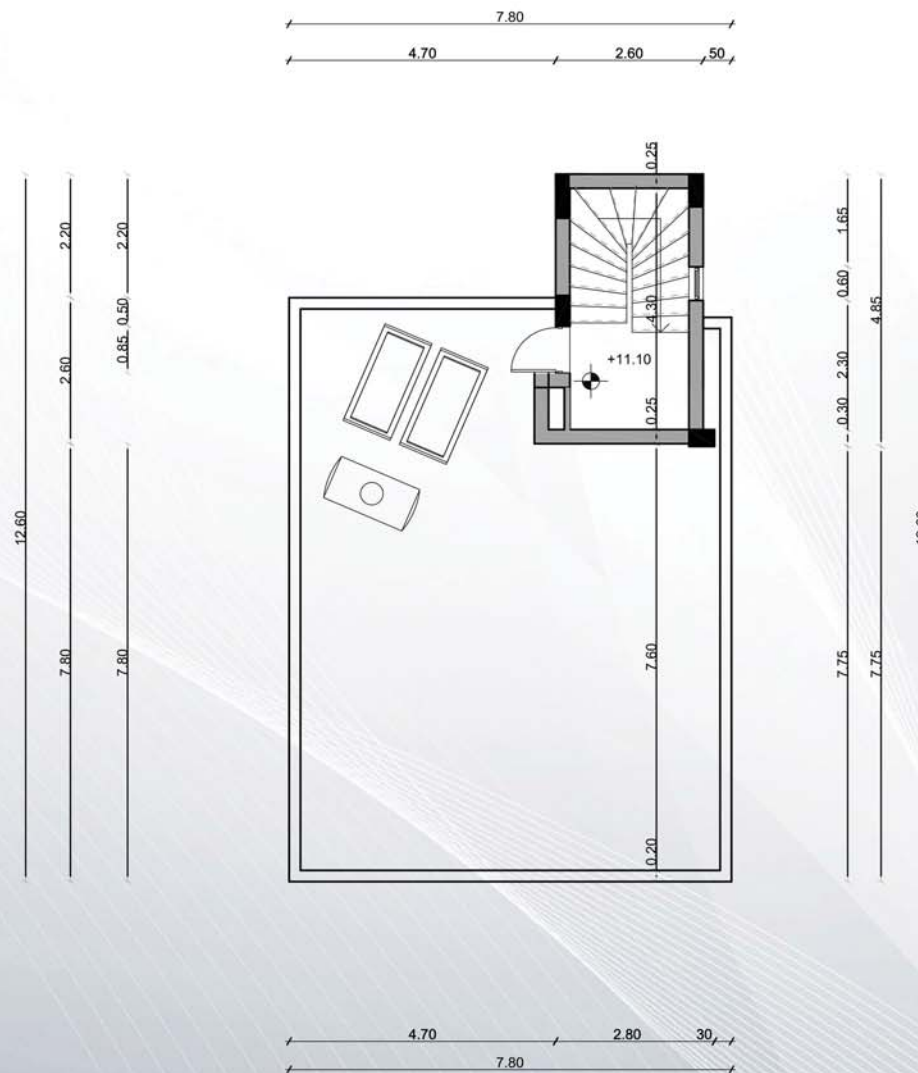
ΗΜΕΡΟΜΗΝΙΑ

ΑΡ. ΣΧΕΔΙΟΥ

ΚΥΜΑΚΑ

1:100

ΚΑΤΟΨΗ ΙΣΟΓΕΙΟΥ



Roof Floor

On Plot 918A&B

MESA CHORIO ROOF
PLAN OPTION B

A.M. 040316

ΗΜΕΡΟΜΗΝΙΑ

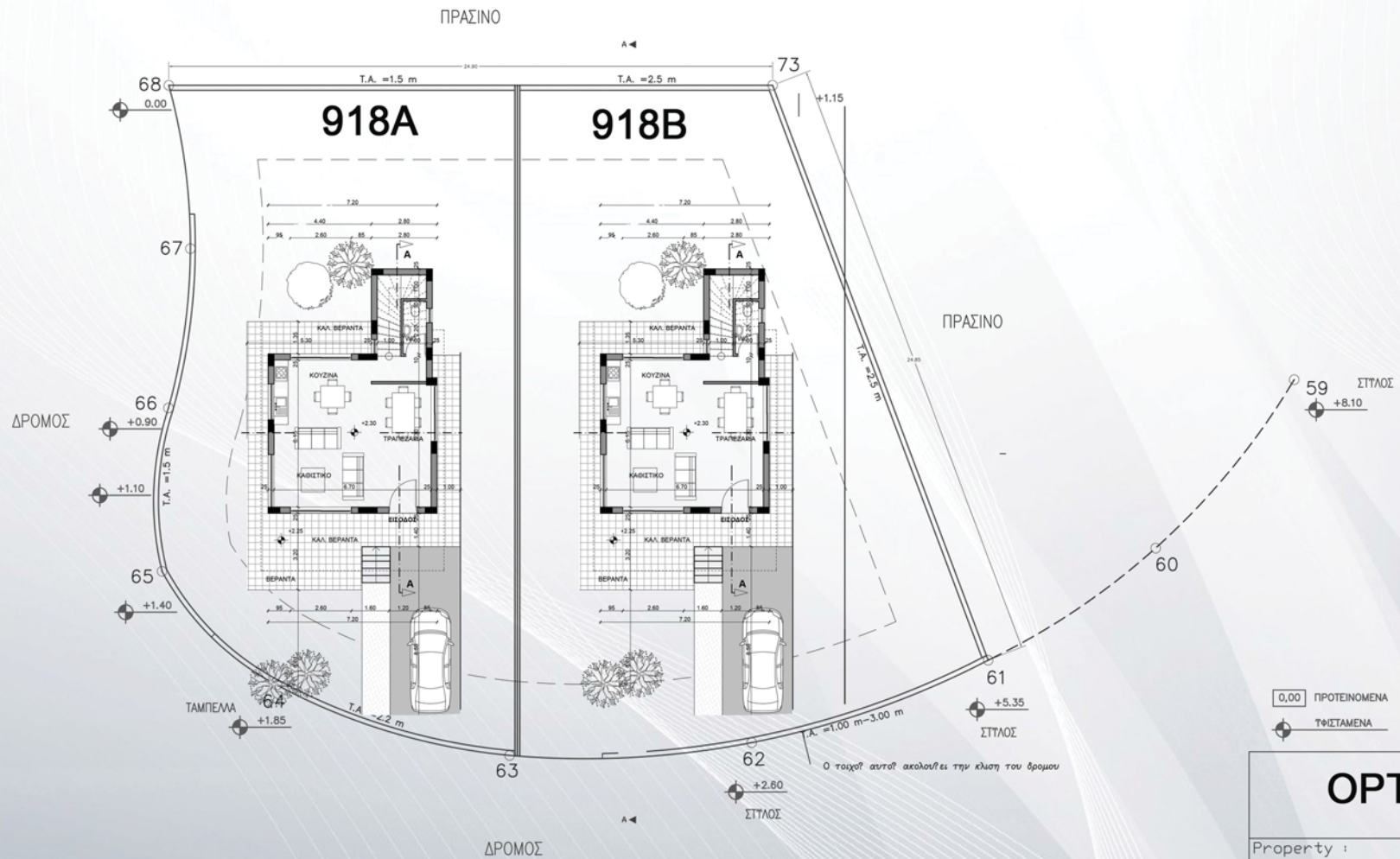
ΑΡ. ΣΧΕΔΙΟΥ

ΚΥΜΑΚΑ

A9.3

1:100

ΚΑΤΟΨΗ ΟΡΟΦΗΣ



Site Plan

OPTION B

Property :

DESIGN No.:

S/Pl.: XLV/52

Plot No.918A & B

TITLE:

SITE PLAN

Date :

Designed for :

Scale :

Location :

1:200

NEO CHORIO

No : 1

SIGNATURE :



Maispa Developers
www.maispa.com
maispa@cy.net
00357 26822221