



AKAMAS PARK VILLAS

OPTION A

St. George Paphos

Cyprus



AKAMAS PARK VILLAS

OPTION A

St. George Paphos
Cyprus

3 & 4 BEDROOM VILLAS

Stunning unobstructed sea and mountain views



The Property

On the border of the Akamas Nature reserve and at the last point of allowed construction, Maispa Developers are offering an exciting selection of villas in a variety of styles and designs. This 3 & 4 bedroom villas with 3.5 bathrooms face the Mediterranean Sea, with the Akamas forest in the background. We had our architects and civil engineers design a modern open plan villa to have interior and exterior finishes finished to the highest standards therefore creating a truly unique properties.

Each style will be designed to complement the beautiful landscape of the area, combining sympathetic architectural touches to embrace all the comforts of contemporary living. We are offering our discerning clients spacious, light-filled living and entertainment areas, generously sized balconies and terraces and large private gardens with infinity pools in the most exclusive location, therefore, this really is a once in a lifetime opportunity to live in the peace and tranquillity of a world recognized, unspoilt site of significant ecological importance.



Exclusive location



AKAMAS PARK VILLAS

OPTION A

St. George Paphos
Cyprus

3 & 4 BEDROOM VILLAS Cutting edge technology



Specifications

Plot Size - From 585 to 1840 Square Metres

Total Covered Area - From 310 to 440 Square Meters

Covered Verandas - From 110 to 165 Square Meters

Uncovered Verandas - From 125 to 200 Square Meters

Roof Garden - 100 Square Meters

Pool - Vanishing Edge

Marble stairs

Feature external stonework

Feature fireplace



Garage with remote controlled doors



AKAMAS PARK VILLAS

OPTION A

St. George Paphos
Cyprus

3 & 4 BEDROOM VILLAS Gated project with remote access



The Area

The Akamas Peninsula is one of the last remaining natural areas on the island and is protected by UNESCO. You can swim, cycle, walk and explore this beautiful area of the island and not be disturbed. It is the most westerly point of the island, covering approximately 230 square km and is where you will find a wild untouched landscape, amazing natural beauty, deep gorges, stunning sandy bays and of course many hundreds of plant and bird species, mammals and reptiles. During spring the area is ablaze with flowers and the scent of anemones, orchids and jasmine are heavy in the air.

Paphos, once the Roman capital of the island, enjoys mild winters and warm, seemingly endless summers. The irrigation system has helped to turn Paphos into the “garden of Cyprus” and it is also renowned as having one of the healthiest climates in the Mediterranean. The Government and private enterprise continue to invest heavily in the infrastructure, providing such features as extending the motorway network, extensive improvements to the picturesque harbour and coastal walkway, a new state-of-the-art marina is planned for around 1000 yachts and the upgrading the International Airport has made it into one of the most modern in the Mediterranean basin.



Optional Roof Garden



AKAMAS PARK VILLAS

OPTION A

*St. George Paphos
Cyprus*

3 & 4 BEDROOM VILLAS

Choice of finishes



Guarantees

Guaranteed title deeds

12 month workmanship guarantee

10 year structural guarantee

Tailored payment terms

After sales service

Option A Type B Villas No. 8 & 9

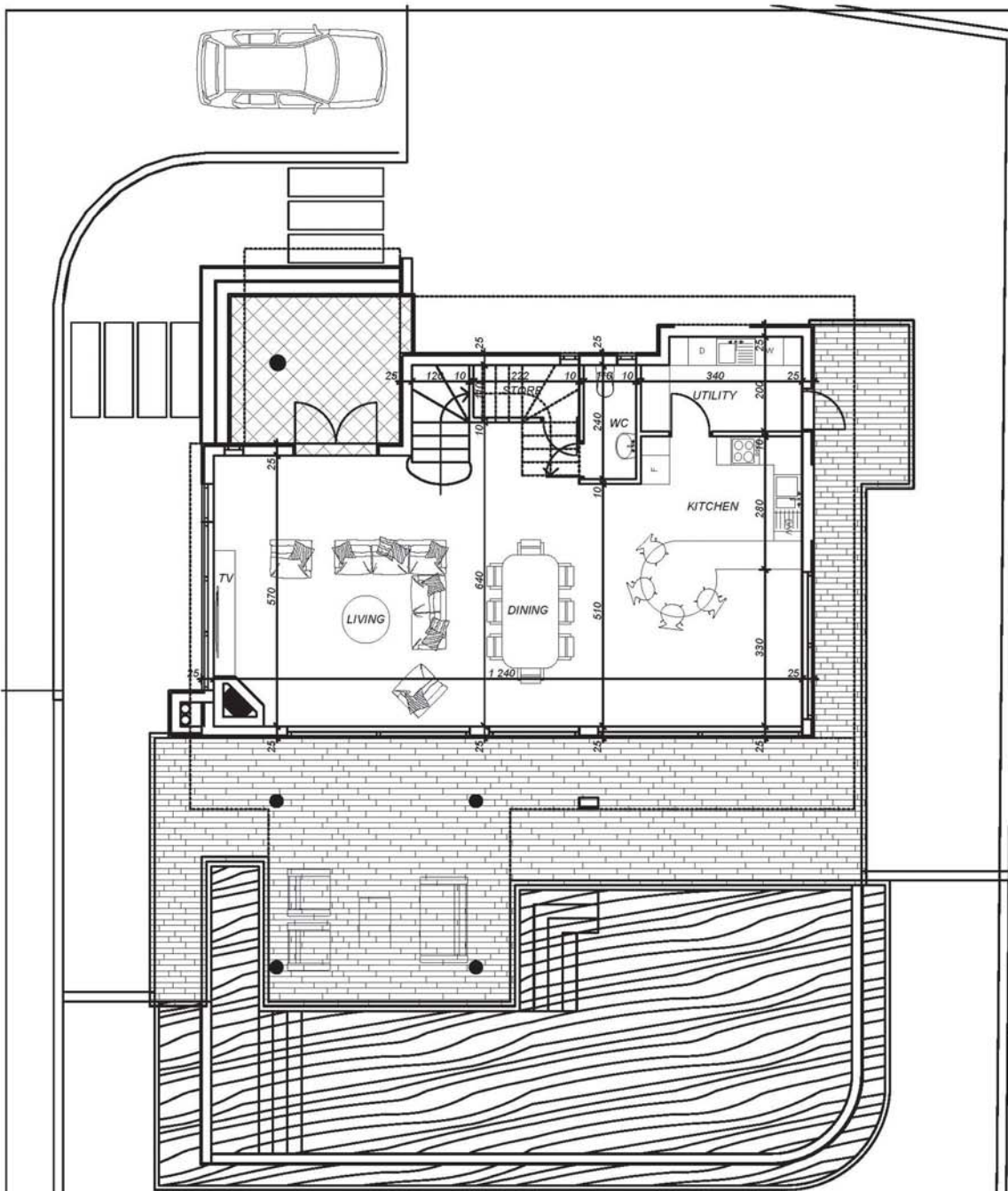


Short walk to the sea



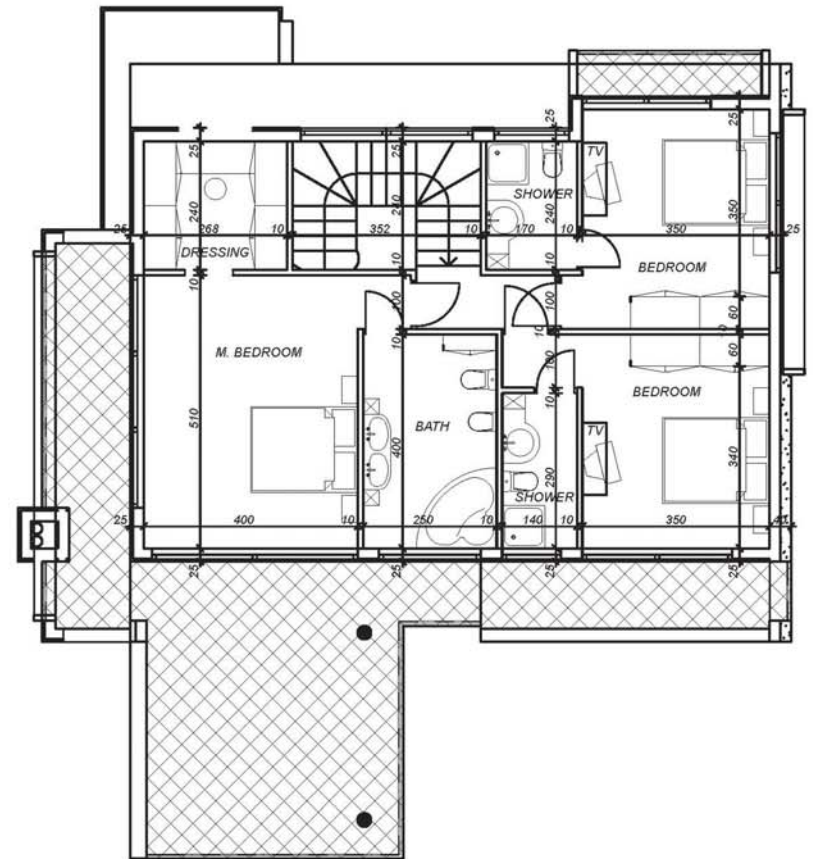
OPTION A

SITE PLAN



PRELIMINARY GROUND FLOOR PLAN

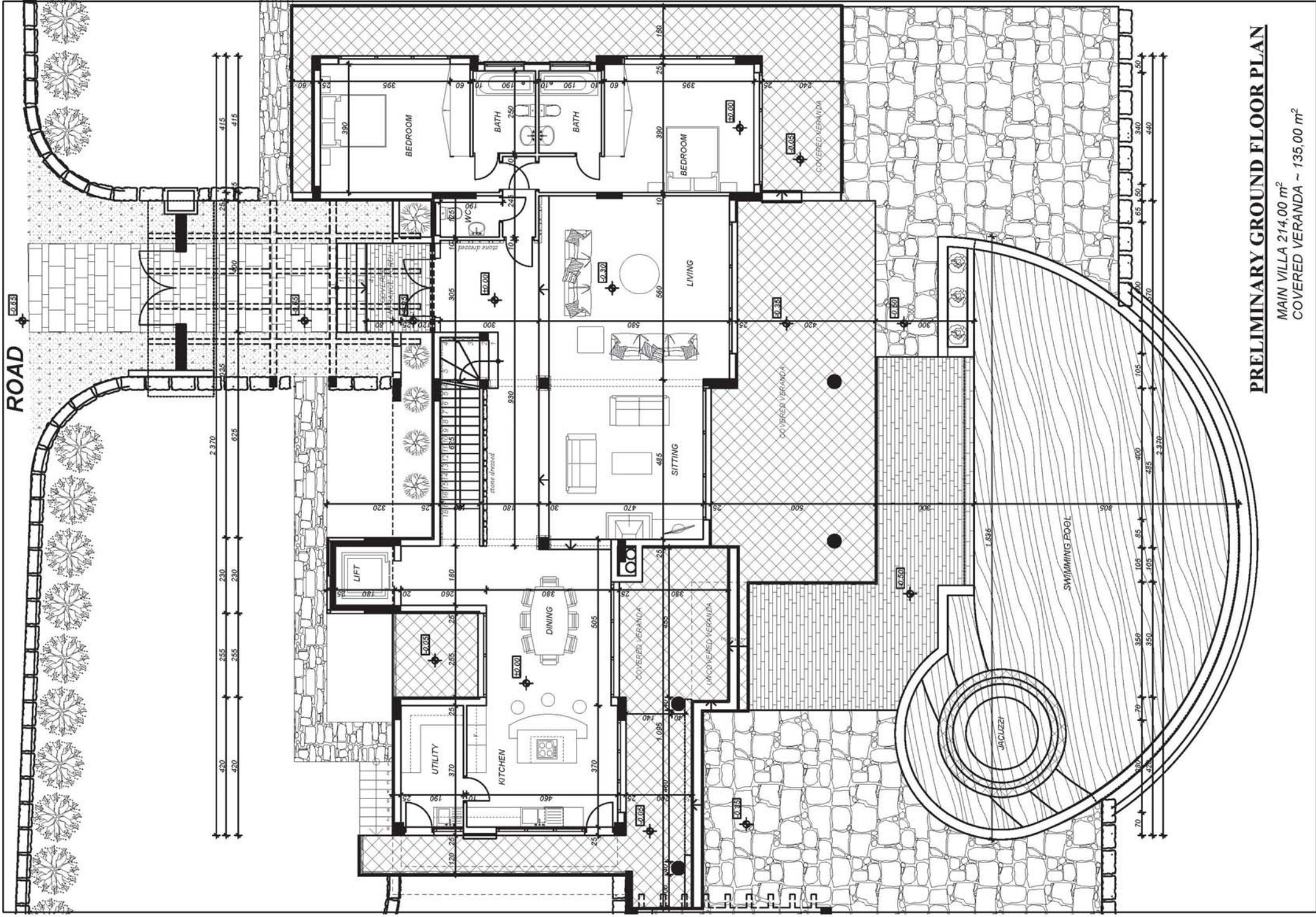
MAIN VILLA 99,00 m²
 COVERED VERANDA ~ 63,00 m²
 UNCOVERED VERANDA ~ 25,00 m²



PRELIMINARY FIRST FLOOR PLAN

MAIN VILLA 101,00 m²
 COVERED VERANDA ~ 50,00 m²

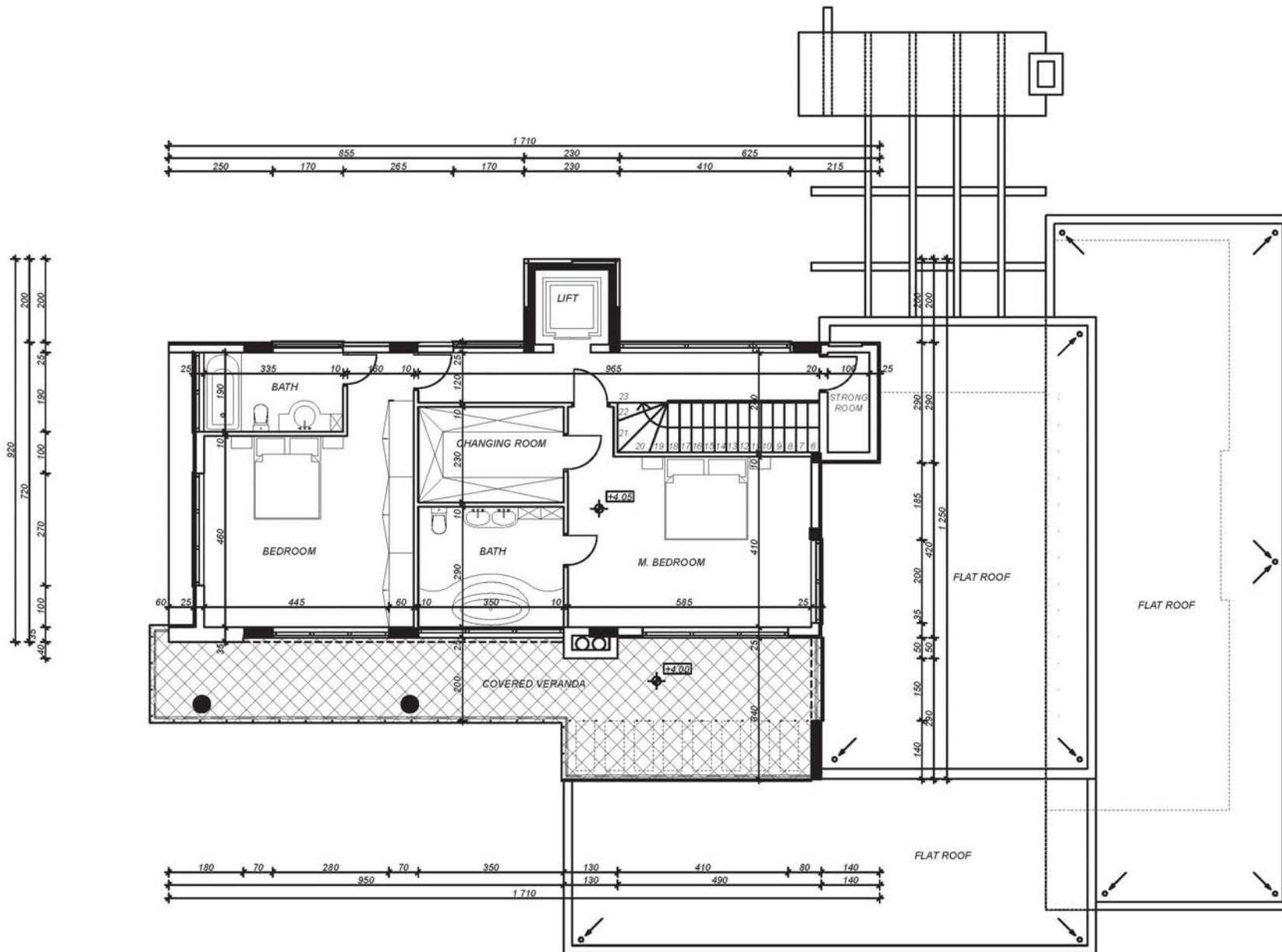
ROAD



PRELIMINARY GROUND FLOOR PLAN

MAIN VILLA 214,00 m²

COVERED VERANDA ~ 135,00 m²



PRELIMINARY FIRST FLOOR PLAN

MAIN VILLA 114,00 m²

COVERED VERANDA ~ 31,00 m²



Maispa Developers
www.maispa.com
maispa@cy.net
00357 26822221